

Controler electronic / termostat digital 230Vac 1 releu 1 sonda PT100 ED66 -150...+550°C #66PT100

Fara TVA: 306,72 Lei
 Pret cu TVA: 365,00Lei

Descriere produs:

Controler electronic / termostat digital 230Vac 1 releu 1
 sonda PT100 ED66 -150...+550°C #66PT100

Tensiune: 230VAC

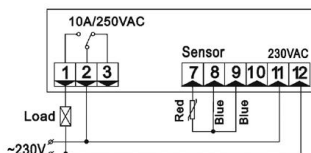
Tip sonda: PT100

Interval temperatura: -150...+550°C

Dimensiuni frontale: 77x35x60mm.

Dimensiuni de montare: 71x29mm.

*Sonda nu este inclusa



Model: ED66 Digital Temperature Controller



Dimension: 77(L) x 35(W) x 60(H) mm
 Mounting hole dimension: 71(L) x 29(W) mm

Features of Function

- It is a micro-processed and integrated intelligent controller
- Temperature Control / Refrigerating & heating modes selection / Value Storing / Self Testing

Specifications

- Power supply: 230VAC
- Temperature sensor: PT100 (purchase additionally, 1pc)
- Range of temperature display: -150~550°C Accuracy: ±1°C
- Range of set temperature: -150~550°C Factory default: 180°C
- Temperature of the operating environment: -10~60°C
- Relative Humidity: 20%~90% (non-condensing)
- Relay output contact capacity: Compressor: N.O. 10A/250VAC

Front Panel Operation

- Set temperature (compressor stop temperature) adjustment
 - Press **OFF** button, the set temperature will be displayed
 - Press **▲** or **▼** button to modify and store the displayed value. The values can be increased or reduced rapidly by pressing **▲** button or **▼** button for more than 2 seconds. Press **SET** button to exit the adjustment and display the cold-room temperature.
 - If no more button is pressed within 6 seconds, the cold-room temperature will be displayed. (Set temperature adjustment range: parameter E1~E2)
- Refrigerating LED: During refrigerating, the LED is on; when the cold-room temp. is constant, the LED is off; during the defrost, the LED flashes.
- Heating LED: during heating, the LED is on; when the cold-room temp. is constant, the LED is off; during the defrost, the LED flashes.
- Parameter setup
 - Press **OFF** button and hold for 6 seconds to enter the parameter setup mode while E1 flashes.
 - Press **▲** or **▼** button to select sequentially from the parameters: E2, E3, E4, E5, E7, E1.
 - Press **▲** or **▼** button, the value of parameters will be displayed and can be modified and stored.
 - If no more button is pressed within 6 seconds, it will return to normal operation mode.